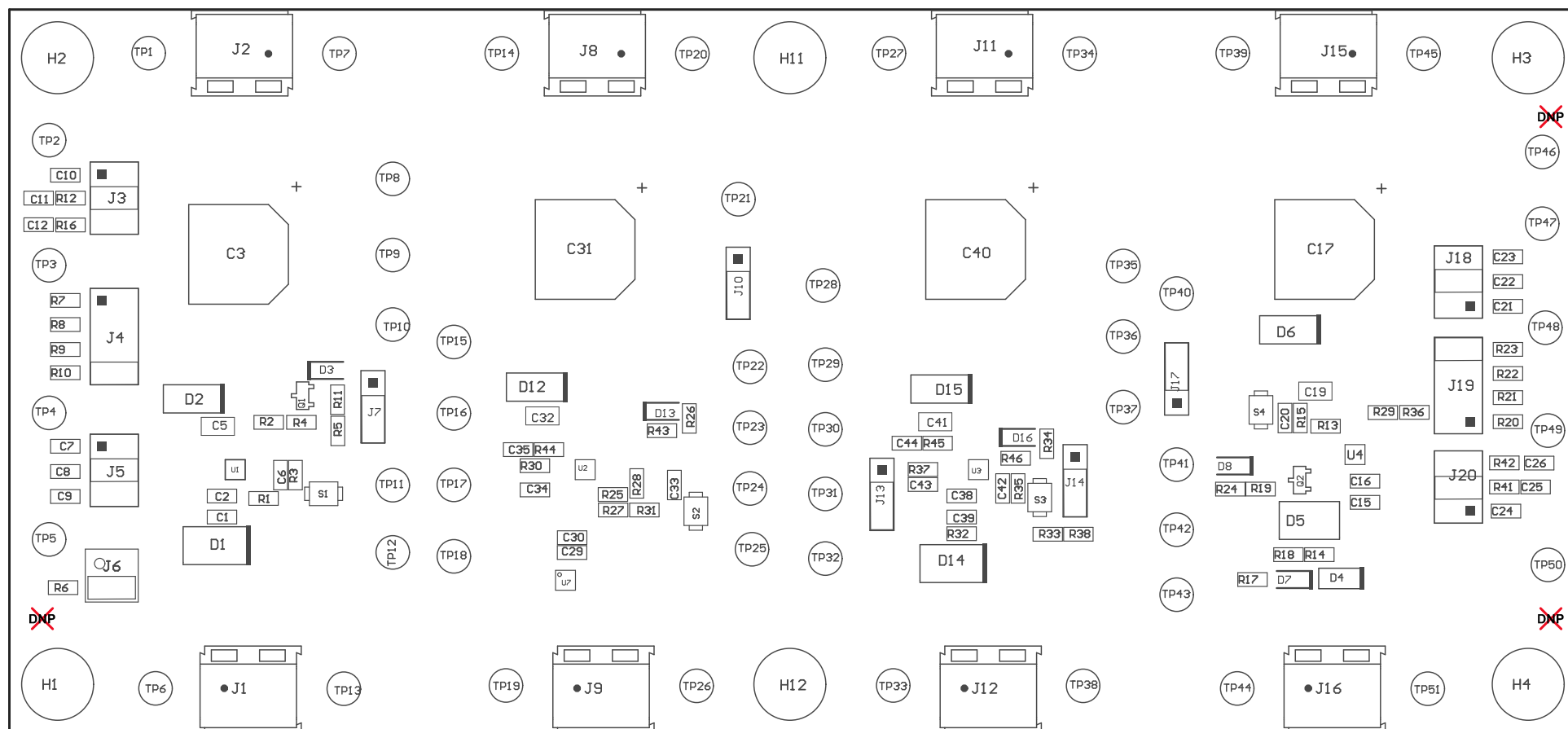


Z21 ■Install label in silkscreened box after final wash. Text shall be 8 pt font. Text shall be per the Label Table in the PDF schematic.

Z22 ■These assemblies are ESD sensitive, ESD precautions shall be observed.

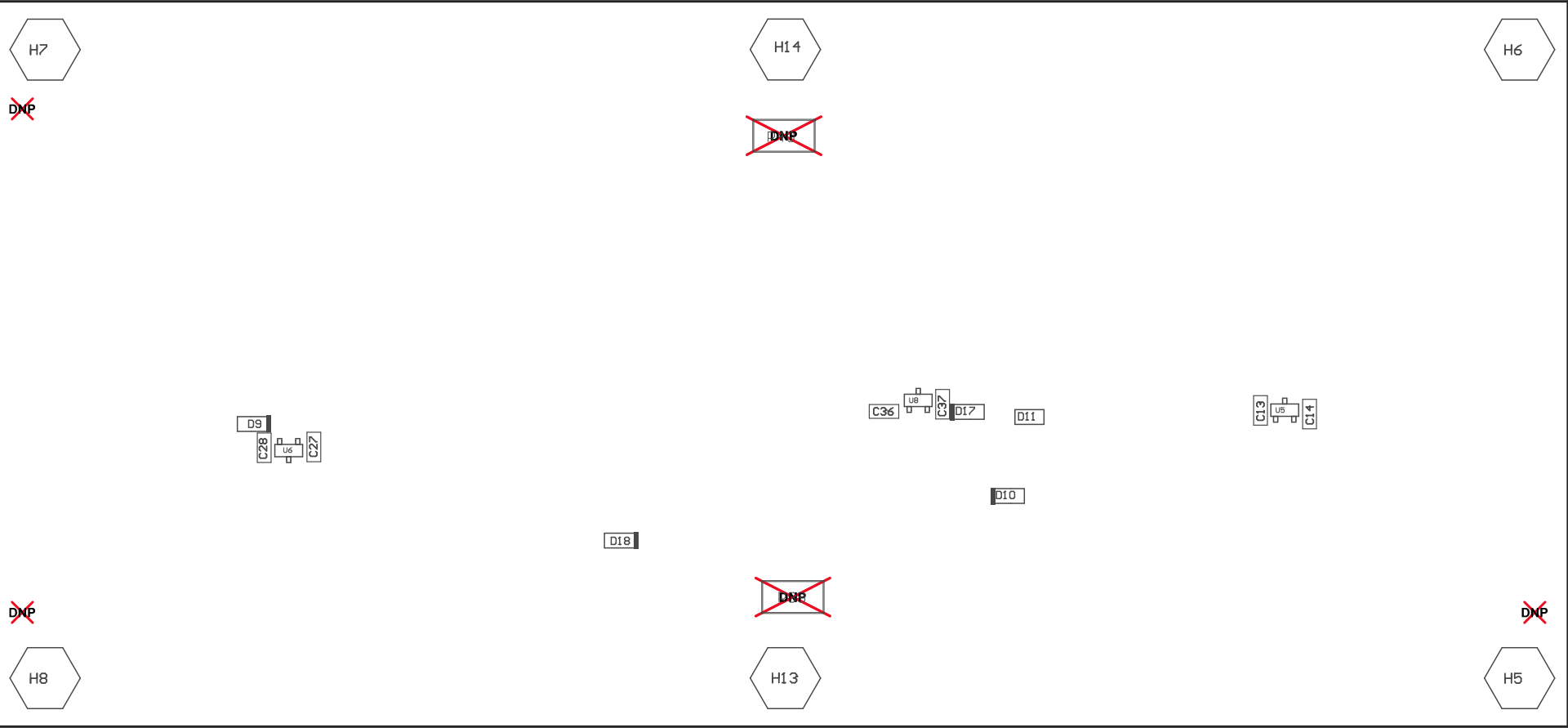
Z23 ■These assemblies must be clean and free from flux and all contaminants. Use of no clean flux is not acceptable.

Z24 ■These assemblies must comply with workmanship standards IPC-A-610 Class 2, unless otherwise specified.



COMPONENTS MARKED 'DNP' SHOULD NOT BE POPULATED.
ASSEMBLY VARIANT: 001

PCB VIEWED FROM TOP SIDE	BOARD #:TPS25947EUM	REV: E1	SUN REV: Not In VersionControl
M5 Assembly Top	TID #: N/A		
PLOT NAME =Top Assembly Drawing	GENERATED : 23-08-2020 15:40:52	TEXAS INSTRUMENTS	



COMPONENTS MARKED 'DNP' SHOULD NOT BE POPULATED.
ASSEMBLY VARIANT: 001

PCB VIEWED FROM BOTTOM SIDE	BOARD #: TPS25947EVM	REV: E1	SVN REV: Not In VersionControl
M6 Assembly Bottom	TID #: N/A		
PLOT NAME =Bottom Assembly Drawing	GENERATED : 23-08-2020 15:40:54	TEXAS INSTRUMENTS	